

<b>3-1 Thyristors</b> .....	<b>34</b>
3-1-1 Thyristors .....	34
3-1-2 3-Terminal Thyristor with built-in Reverse Diode for HID Lamp Ignition .....	35
3-1-3 Thyristors with Built-in Avalanche Diode .....	35
<b>3-2 Triacs</b> .....	<b>36</b>
<b>3-3 PNP Switches</b> .....	<b>38</b>

3-1-1 Thyristors

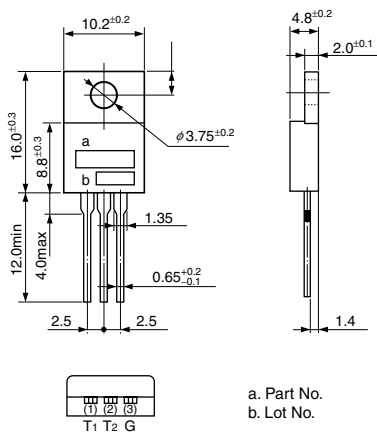
Part No.	V <sub>DRM</sub> (V)	I <sub>T</sub> (A) (A)	I <sub>GT</sub> (max) (mA)	Package	Fig. No.
TF321M-A	200	3	0.1	TO-220	1
TF321M			10	TO-220	
TF321S			15	TO-220F	
TF521M	200	5	15	TO-220	1
TF521S			15	TO-220F	2
TF821M			8	15	TO-220
TF821S	TO-220F	2			
TF341S	15				TO-220F
TF341M-A	400	3	0.1	TO-220	1
TF341M			10	TO-220	
TF541S-A			5	0.2	
TF541M	15	TO-220		1	
* TF541S		TO-220F		2	
TF841M	8	15	TO-220	1	
* TF841S			TO-220F	2	

Part No.	V <sub>DRM</sub> (V)	I <sub>T</sub> (A) (A)	I <sub>GT</sub> (max) (mA)	Package	Fig. No.	
TF361M-A	600	3	0.1	TO-220	1	
TF361M			10	TO-220		
TF361S			15	TO-220F		
TF561S-A	600	5	0.2	TO-220F	2	
TF561M			15	TO-220		1
* TF561S				TO-220F		2
SLA0201	600	5x4 circuits	10	SIP12Pin	3	
TF861M		8	15	TO-220	1	
* TF861S				TO-220F	2	

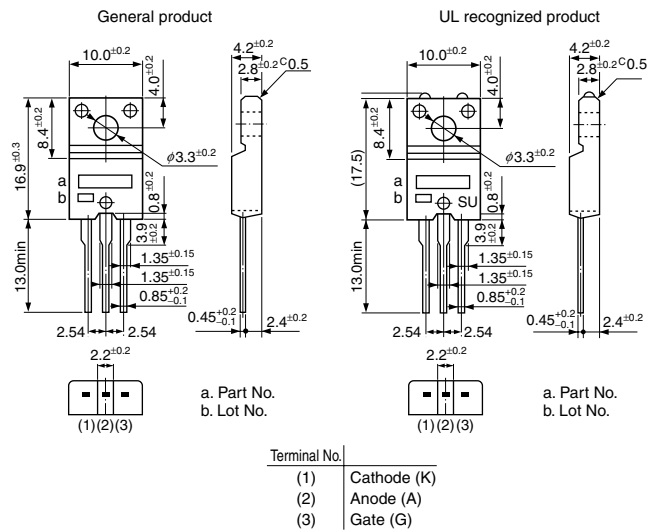
\* UL recognized products are available.

External Dimensions

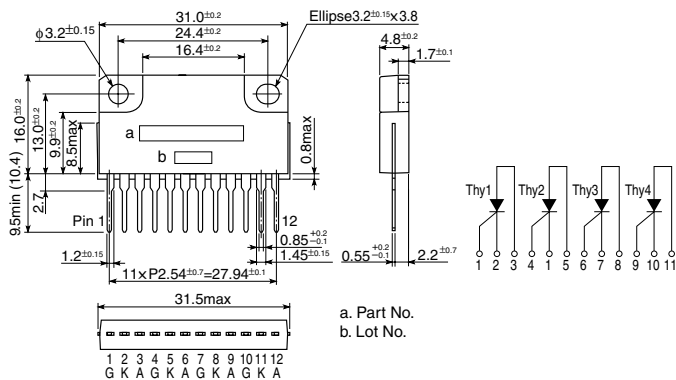
• No. 1



• No. 2



• No. 3



(unit: mm)

### 3-1-2 3-Terminal Thyristor with built-in Reverse Diode for HID Lamp Ignition

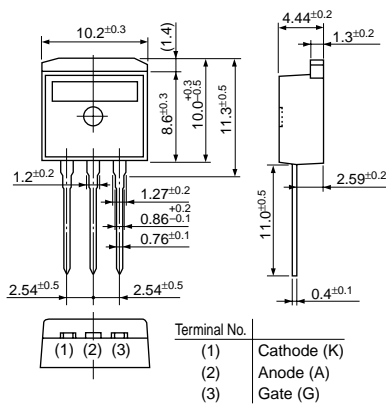
Part No.	V <sub>DRM</sub> (V)	I <sub>TRM</sub> (A)	di/dt (A/μs)	Package	Fig. No.
TFC561D	600	430	1200	TO-220S	1

### 3-1-3 Thyristors with Built-in Avalanche Diode

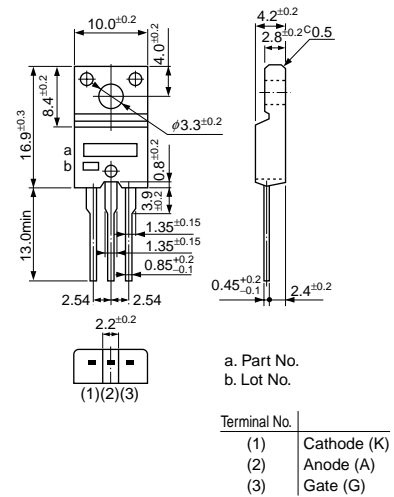
Part No.	V <sub>BO</sub> (V)	V <sub>DRM</sub> (V)	I <sub>T(AV)</sub> (A)	Package	Fig. No.
TFD312S-C	30±3	20	3	TO-220F	2
TFD312S-F	55±5	35			
TFD312S-G	65±5	45			
TFD312S-J	100±10	80			
TFD312S-K	125±10	100			
TFD312S-L	150±10	120			
TFD312S-M	175±12	145			
TFD312S-N	200±15	170			
TFD312S-O	225±15	190			

## External Dimensions

• No. 1



• No. 2



(unit: mm)

Part No.	V <sub>DRM</sub> (V)	I <sub>T(AV)</sub> (A)	I <sub>GT(max)</sub> (mA)	Package	Remarks	Fig. No.	
STA221A	400	1.0 × 4 circuits	3	SIP10Pin	Array	1	
STA203A		1.2 × 3 circuits	3	SIP8Pin	Array	2	
* TM341S-R		3	3	12	TO-220F	For R load	3
TM341M-L				20	TO-220	For L load	4
* TM341S-L		5	3	12	TO-220F	For L load	3
* TM541S-R				20	TO-220	For L load	
TM541M-L		8	3	20	TO-220F	For L load	4
* TM541S-L				30	TO-220	For L load	3
* TM841M-L		10	3	7	TO-220F	For L load	4
* TM841S-L				30	TO-220F	For R load	
* TM1041S-R		12	3	7	TO-220F	For L load	3
* TM1041S-L				30	TO-220F	For R load	
* TM1241S-R		16	3	8	TO-220F	For L load	3
* TM1241S-L				30	TO-220F	For L load	
* TM1641S-L		25	3	30	TO-220F	For L load	5
TM1641P-L(L)				30	TO-3P	For L load	
* TM1641B-L		3	3	30	TO-3PF	For L load	6
* TM2541B-L				30	TO-3PF	For L load	
* TM361S-R		600	3	12	TO-220F	For L load	3
TM361M-L				20	TO-220	For L load	4
* TM361S-L	5		3	12	TO-220F	For L load	3
* TM561S-R				20	TO-220	For R load	
TM561M-L	8		3	12	TO-220F	For L load	4
* TM561S-L				20	TO-220	For L load	
TM861M-L	10		3	7	TO-220F	For L load	4
* TM861S-L				30	TO-220F	For L load	
* TM1061S-R	12		3	7	TO-220F	For R load	3
* TM1061S-L				30	TO-220F	For L load	
* TM1261S-R	16		3	8	TO-220F	For L load	3
* TM1261S-L				30	TO-220F	For L load	
* TM1661S-L	25		3	30	TO-220F	For L load	5
TM1661P-L(L)				30	TO-3P	For L load	
* TM1661B-L	3		3	30	TO-3PF	For L load	6
* TM2561B-L				30	TO-3PF	For L load	
TM583S-L	800		5	20	TO-220F	For L load	3
TM883S-L			8	30	TO-220F	For L load	

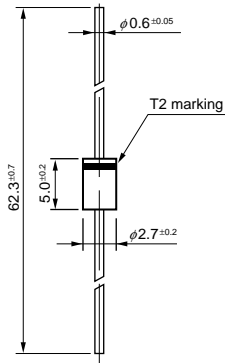
\*UL recognized products are available.



Part No.	V <sub>BO</sub> (V)	V <sub>DRM</sub> (V)	I <sub>T (RMS)</sub> (A)	Package	Fig. No.
ET013	120~138	90	0.6	Axial	1
ET015	142~157	115			
ET020	190~210	170			

## External Dimensions

## • No. 1



(unit: mm)